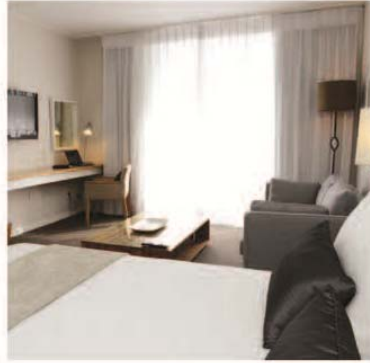


ATLANTIC BEACH HOTEL  
MELKBOSSTRAND



2017/18

MEET EAT SLEEP EXPLORE

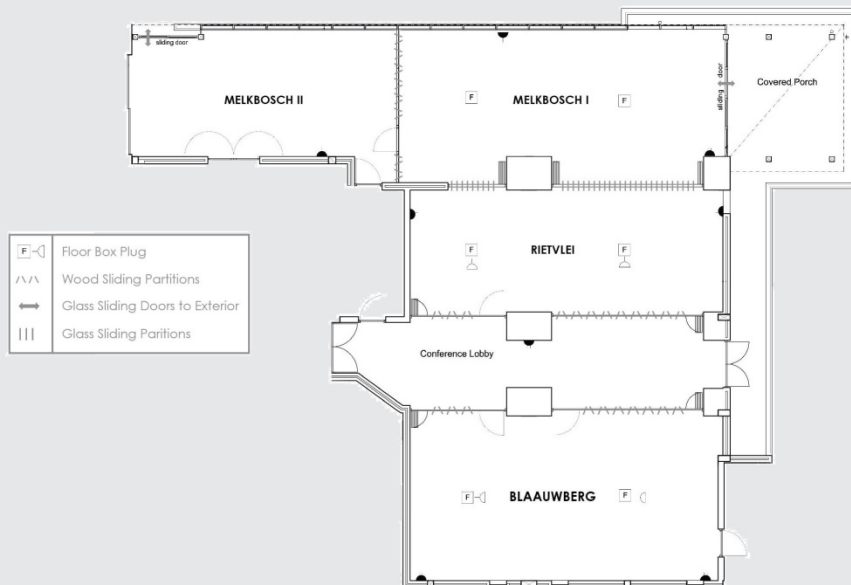
The four-star boutique **Atlantic Beach Hotel** is located in the tranquil village of Melkbosstrand, the gateway to the West Coast, and is 300 meters from a 7 kilometer stretch of pristine sand beach offering an unrivalled view of Cape Town's iconic Table Mountain. This privately owned and independently managed hotel was established in 2009 and is decorated in rustic and muted tones reflecting the hotel's beachside location.

The **Atlantic Beach Hotel and Conference Centre** offers a calm setting in which to hold a meeting, conference, product launch, presentation, banquet, luncheon, cocktail function, private dinner, or a wedding.

The **Conference Centre** is flexible depending on the individual requirements and includes a conference foyer for a registration or hospitality desk, or for tea and coffee breaks. The foyer leads onto an undercover outdoor area for fresh air breaks.

Each of the three meeting venues can function independently or simultaneously. In 2016 the soundproof operable walls that separate each venue were completely upgraded and offer a sound transmission class (STC) rating of 49dB and above head height viewing panels to allow maximum natural light.

ROOM	THEATRE 	CLASSROOM 	U-SHAPE 	BANQUET 	COCKTAIL 	DIMENSIONS
<b>BLAAUWBERG</b>	80	42	28	60	70	74.6m <sup>2</sup>
<b>RIETVLE</b>	54	24	20	40	50	56.2m <sup>2</sup>
<b>BLAAUWBERG + RIETVLE</b>	-	-	-	120	130	177.0m <sup>2</sup>
<b>MELKBOSCH I</b>	63	24	27	50	60	61.3m <sup>2</sup>
<b>MELKBOSCH II</b>	-	-	15	30	50	49.7m <sup>2</sup>
<b>MELKBOSCH I + MELKBOSCH II</b>	112	40	-	80	110	111.0m <sup>2</sup>
<b>RIETVLE + MELKBOSCH I</b>	-	-	-	100	130	117.5m <sup>2</sup>
<b>BLAAUWBERG + RIETVLEI + MELKBOSCH</b>	-	-	-	200	170	238.3m <sup>2</sup>



## FULL DAY BUSINESS PACKAGE

The **Full Day Business Package** aims to ensure delegates focus on the business at hand.

This Package offers delegates arrival coffee & tea served with a pastry, mid-morning coffee & tea served with a snack, a 3 course lunch served with a soft drink followed by afternoon coffee & tea with biscuits.

The venue is presented with mineral water, mints, notepad & pen for all delegates.

Venue hire and standard conference equipment (data projector, screen and flipchart) in addition to complimentary Internet access and secure on-site parking are included in the **Full Day Business Package**.

R385- per delegate

## HALF DAY BUSINESS PACKAGE

Only need half a day? The **Half Day Business Package** offers delegates arrival coffee & tea served with a pastry, mid-morning coffee & tea served with a snack, and a 3 course lunch served with a soft drink.

The venue is presented with mineral water, mints, notepad & pen for all delegates.

Venue hire and standard conference equipment (data projector, screen and flipchart) in addition to complimentary Internet access and secure on-site parking are included in the **Half Day Business Package**.

R310- per delegate

## TRAINING PACKAGE

Specifically created with training workshops in mind, the **Training Package** offers delegates arrival coffee & tea served with a pastry, mid-morning coffee & tea served with a snack, a 2 course lunch served with a soft drink, followed by afternoon coffee & tea with biscuits.

The venue is presented with jugs of water, notepad & pen for all delegates.

Venue hire and standard conference equipment (data projector, screen and flipchart) in addition to complimentary Internet access and secure on-site parking are included in the **Training Package**.

R255- per delegate



## CONFERENCE PACKAGE RATE

- The Conference Package Rate is **quoted per delegate** and includes the package elements as detailed in the relevant Conference Package.
- The Conference Package Rates are quoted in **South African Rands** and **include Value Added Tax** at the applicable rate (14%).
- A **surcharge** is applicable for **Halaal meals** requested.
- The Conference Package Rates quoted are **valid** until 28 February 2018 and are subject to change without notification.

## CONFERENCE EQUIPMENT AND SERVICES

- Flip chart, data projector, and screen are made available as **standard conference equipment**.
- Each venue is **individually air conditioned / heated** with adjustable lighting.
- The Conference Package Rates quoted above include **complimentary Wi-Fi** and **secure on-site delegate parking**.
- Each delegate is provided with a **conference notepad and pen**.
- Use of the **Business Centre** with computer connection facilities.
- **Additional equipment and services** can, on request, be arranged on your behalf. Any additional equipment and services requested may **attract an additional charge**.

## TERMS AND CONDITIONS

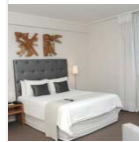
- Upon making a **provisional booking**, a **50% deposit** for the full Conference is required within 7 days to secure the reservation. The balance is payable prior to the first day of the conference.
- For **1 day conferences 100% prepayment** is required to secure the conference booking.
- **Atlantic Beach Hotel** reserves the right to **release conference bookings** held should prepayment not reach the Hotel prior to the deposit deadlines as stipulated.

## CANCELLATION POLICY

- A **100% cancellation fee** of the conference booking value will be charged if the booking is cancelled from 3 days prior to the event date.
- This also applies to a **'No show'**.



## GUEST ACCOMMODATION



### MOUNTAIN FACING ROOMS

Approximately 20 square meters, these rooms overlook the Blaauwberg Mountain and offer either twin beds or one queen bed with en suite shower.



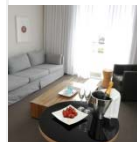
### SEA FACING TWIN ROOMS

Approximately 21 square meters with twin beds, work station, en suite shower and balcony overlooking the peaceful village of Melkbosstrand.



### SEA FACING QUEEN ROOM

Approximately 32 square meters with one queen bed, a sitting area, work station, en suite bath and separate shower, and balcony overlooking the peaceful village of Melkbosstrand.



### SEA FACING SUITES

Comprise of a well-appointed lounge and guest WC with a separate, spacious queen bedded en-suite bedroom with a work station and balconies with wrap around views of the village and Atlantic Ocean. Suites are approximately 52 square meters.

## ACCOMMODATION RATES

ROOM TYPE	No.	FULL BREAKFAST RATE		HALF BOARD RATE	
		SINGLE	DOUBLE	SINGLE	DOUBLE
Mountain Facing Rooms	10	R1 180	R1 500	R1 480	R2 100
Sea Facing Twin Rooms	12	R1 330	R1 655	R1 630	R2 255
Sea Facing Queen Room	14	R1 500	R1 825	R1 800	R2 425
Sea Facing Suites	2	R1 995	R2 320	R2 295	R2 920

## RATES INCLUDE/ EXCLUDE

- The **Full Breakfast Rate** includes a Full English Breakfast per person per day.
- The **Half Board Rate** includes a two-course dinner accompanied by two (2) soft drinks and a Full English Breakfast per person per day.
- Rates include complimentary in-room Mini Bar Select, Wi-Fi, on-site secure parking, and 14% VAT.
- Rates exclude a Tourism Levy charged at 1% of the Room Rate per night.

## TERMS AND CONDITIONS

- Check in time is **from 14h00** on the day of arrival and check out is **by 10h00** on the day of departure.
- Rates are applicable until **28 February 2018**.
- Rates are quoted in **South African Rands** and are subject to change without prior notification.
- The above rates are **nett and non-commissionable**.
- **Upon making a provisional booking, a 50% deposit or an accommodation voucher for the full stay is required within 14 days to secure the reservation.** The balance is payable on the day of arrival.
- **For 1 night stays 100% deposit/ accommodation voucher is required to secure the reservation.**
- A **50% cancellation fee** of the total stay will be charged if the booking is cancelled within **7 to 14** days prior to the arrival date.
- A **100% cancellation fee** of the reservation value will be charged if the booking is cancelled from **6** days prior to day of arrival.
- This also applies for a **"No show"**.

ACCOMMODATION OPTIONS



Being situated in the tranquil village of Melkbosstrand, the **Atlantic Beach Hotel** is well positioned to enable delegates to take advantage of the diversity the West Coast has to offer. Should you require assistance with developing the most suitable team building program, please do not hesitate to ask for our assistance.

*Below is but a sample of activities, not only available in and around Melkbosstrand, but also within close driving distance from the Hotel.*

## IN AND AROUND MELKBOSSTRAND

- Bicycling
- Golf
- Horse riding
- Paintballing
- Quad biking
- Trail blazing in the Koeberg Nature Reserve

## WITHIN HALF AN HOUR'S DRIVE

- !Khwa ttu - San cultural and educational centre
- Buffelsfontein Game and Nature Reserve
- Groote Post historic wine farm
- Kite surfing
- Ostrich Farm
- Paddle boarding
- Skydiving
- West Coast Nature Reserve

## WITHIN AN HOUR'S DRIVE

- Fishing in Langebaan



We look forward to welcoming you to the  
**Atlantic Beach Hotel and Conference Centre**

**DISTANCES TO**

- Atlantis 21 km/ 13 miles
- Bellville 39 km/ 24 miles
- Canal Walk/Century City 23 km/ 14 miles
- CTICC 30 km/ 18 miles
- V&A Waterfront 30 km/ 18 miles
- Milnerton 18 hole Golf Course 18 km/ 11 miles
- Saldanha 114 km/ 71 miles

**GPS**

S 33°43.596' E 018°26.6531'



LOCATION

**PHYSICAL ADDRESS**

Cnr Commaille Road and 11<sup>th</sup> Avenue | Melkbosstrand | 7441

**POSTAL ADDRESS**

P O Box 780 | Melkbosstrand | 7437

**TELEPHONE NUMBER**

021 553 1800

**FACSIMILE NUMBER**

021 553 1822

**E-MAIL ADDRESS**

info@AtlanticBeachHotel.co.za

**WEBSITE**

www.AtlanticBeachHotel.co.za

CONTACT